

B7H3
Purified Mouse Monoclonal Antibody
Catalog # AO2699a**Specification**

B7H3 - Product Information

Application	WB, IHC, ICC, E
Primary Accession	Q5ZPR3
Reactivity	Human
Host	Mouse
Clonality	Monoclonal
Isotype	Mouse IgG1
Calculated MW	57.2kDa KDa
Immunogen	

Purified recombinant fragment of human B7H3 (AA: extra 29-466) expressed in HEK293 cells.

Formulation

Purified antibody in PBS with 0.05% sodium azide

B7H3 - Additional Information

Gene ID 80381

Other Names

CD276; B7-H3; B7RP-2; 4Ig-B7-H3

Dilution

WB~~ 1/500 - 1/2000

IHC~~1:100~500

ICC~~N/A

E~~ 1/10000

Storage

Maintain refrigerated at 2-8°C for up to 6 months. For long term storage store at -20°C in small aliquots to prevent freeze-thaw cycles.

Precautions

B7H3 is for research use only and not for use in diagnostic or therapeutic procedures.

B7H3 - Protein Information

Name CD276

Synonyms B7H3

Function

May participate in the regulation of T-cell-mediated immune response. May play a protective role

in tumor cells by inhibiting natural-killer mediated cell lysis as well as a role of marker for detection of neuroblastoma cells. May be involved in the development of acute and chronic transplant rejection and in the regulation of lymphocytic activity at mucosal surfaces. Could also play a key role in providing the placenta and fetus with a suitable immunological environment throughout pregnancy. Both isoform 1 and isoform 2 appear to be redundant in their ability to modulate CD4 T-cell responses. Isoform 2 is shown to enhance the induction of cytotoxic T-cells and selectively stimulates interferon gamma production in the presence of T-cell receptor signaling.

Cellular Location

Membrane; Single-pass type I membrane protein

Tissue Location

Ubiquitous but not detectable in peripheral blood lymphocytes or granulocytes. Weakly expressed in resting monocytes Expressed in dendritic cells derived from monocytes. Expressed in epithelial cells of sinonasal tissue. Expressed in extravillous trophoblast cells and Hofbauer cells of the first trimester placenta and term placenta.

B7H3 - Protocols

Provided below are standard protocols that you may find useful for product applications.

- [Western Blot](#)
- [Blocking Peptides](#)
- [Dot Blot](#)
- [Immunohistochemistry](#)
- [Immunofluorescence](#)
- [Immunoprecipitation](#)
- [Flow Cytometry](#)
- [Cell Culture](#)

B7H3 - Images

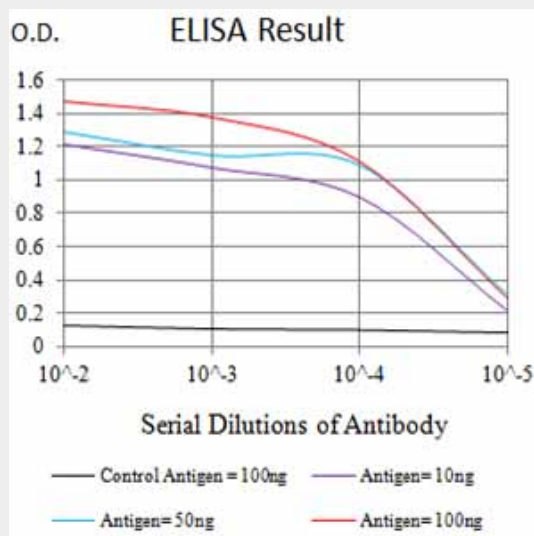


Figure 1: Black line: Control Antigen (100 ng); Purple line: Antigen (10 ng); Blue line: Antigen (50 ng); Red line: Antigen (100 ng)

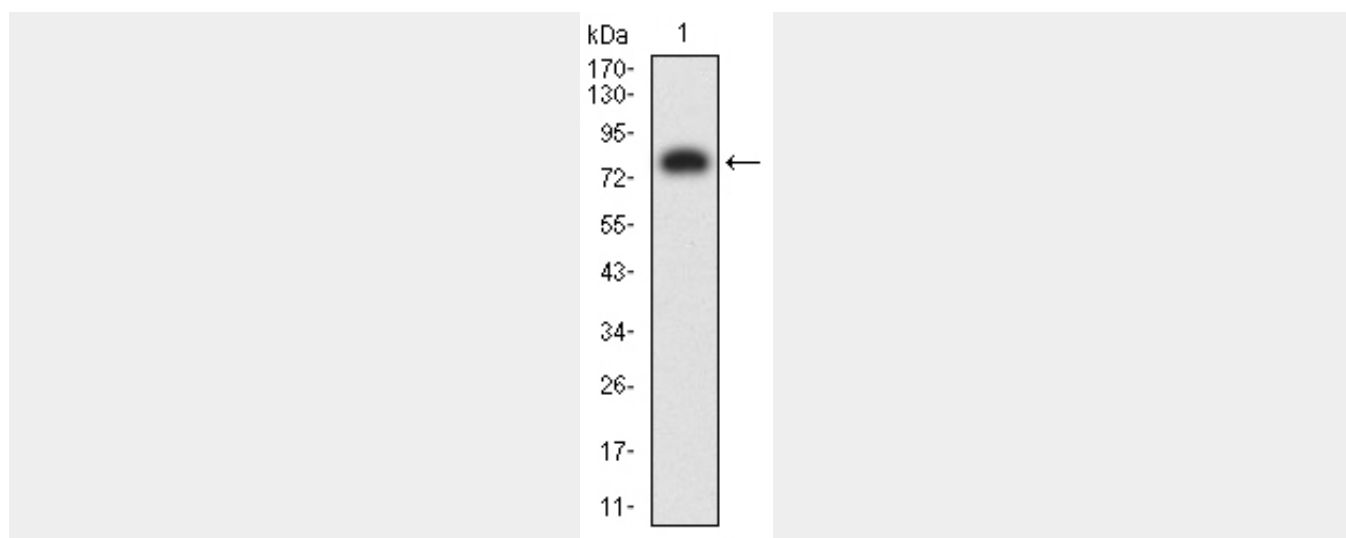


Figure 2: Western blot analysis using B7H3 mAb against human B7H3 (AA: extra 29-466) recombinant protein. (Expected MW is 76.9 kDa)

B7H3 - References

1. Int J Clin Exp Pathol. 2015 Nov 1;8(11):13987-95. 2. BMC Cancer. 2014 Aug 20;14:602.